

PRINTER CALIBRATION PAGE

Print this page to calibrate your printer for best color accuracy and print quality.

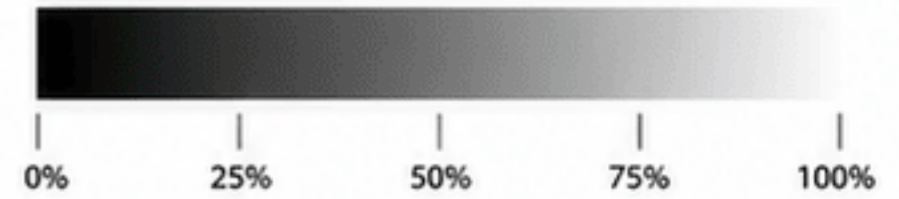
1. COLOR BLOCKS (CMYK)



2. CMY GRADIENTS



3. K (BLACK) GRADIENT



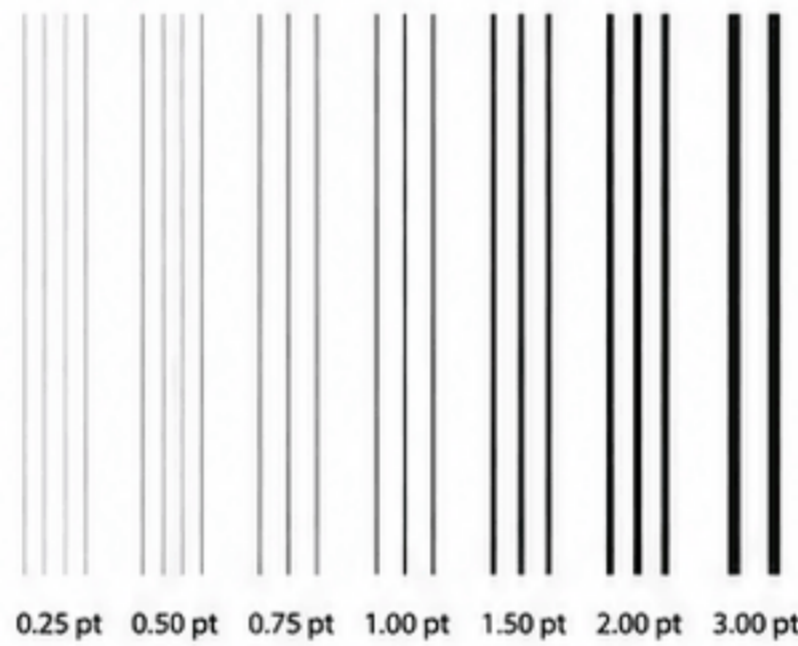
4. CMYK GRADIENT



5. COLOR PATCHES



6. FINE LINE TEST (VERTICAL)



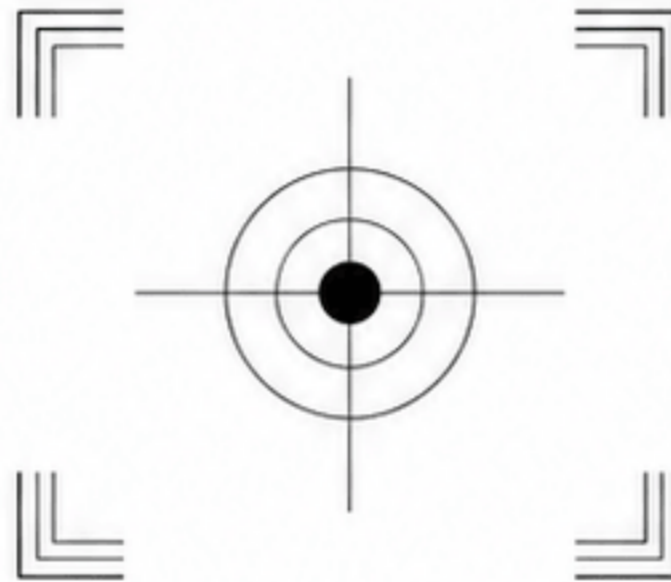
7. FINE LINE TEST (HORIZONTAL)



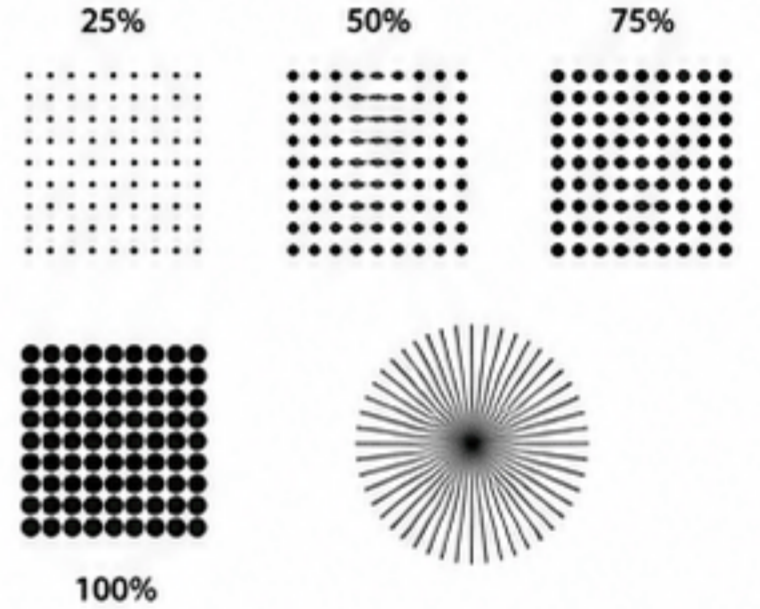
8. TEXT QUALITY TEST

4 pt The quick brown fox jumps over the lazy dog.
 6 pt The quick brown fox jumps over the lazy dog.
 8 pt The quick brown fox jumps over the lazy dog.
 10 pt The quick brown fox jumps over the lazy dog.
 12 pt The quick brown fox jumps over the lazy dog.
 14 pt The quick brown fox jumps over the lazy dog.
 16 pt The quick brown fox jumps over the lazy dog.
 18 pt The quick brown fox jumps over the lazy dog.
 20 pt The quick brown fox jumps over the lazy dog.
 24 pt The quick brown fox jumps over the lazy dog.

9. ALIGNMENT TEST



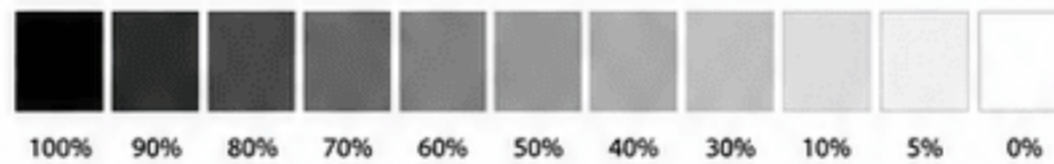
10. DOT PATTERN (FOCUS TEST)



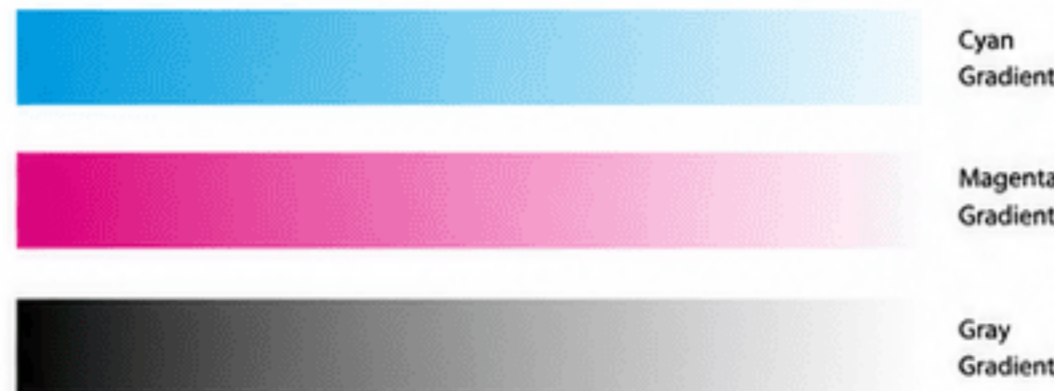
11. REGISTRATION / OVERLAP TEST



12. GRAYSCALE STEPS



13. SMOOTH GRADIENTS (BANDING TEST)



14. IMAGE QUALITY TEST



PRINTING TIPS

- ✔ Use A4 size paper
- ✔ Use High Quality or Best Quality mode
- ✔ Print at 100% scale (Actual size)
- ✔ Ensure ink/toner levels are sufficient
- ✔ Disable "Fit to page"

EVALUATION GUIDE

- Missing colors → Clean print heads / Check ink or toner
- Faded colors → Check ink levels / Use correct profile
- Banding → Check paper / Try different quality mode
- Lines or streaks → Clean print heads / Check drum or roller
- Misalignment → Run printer alignment